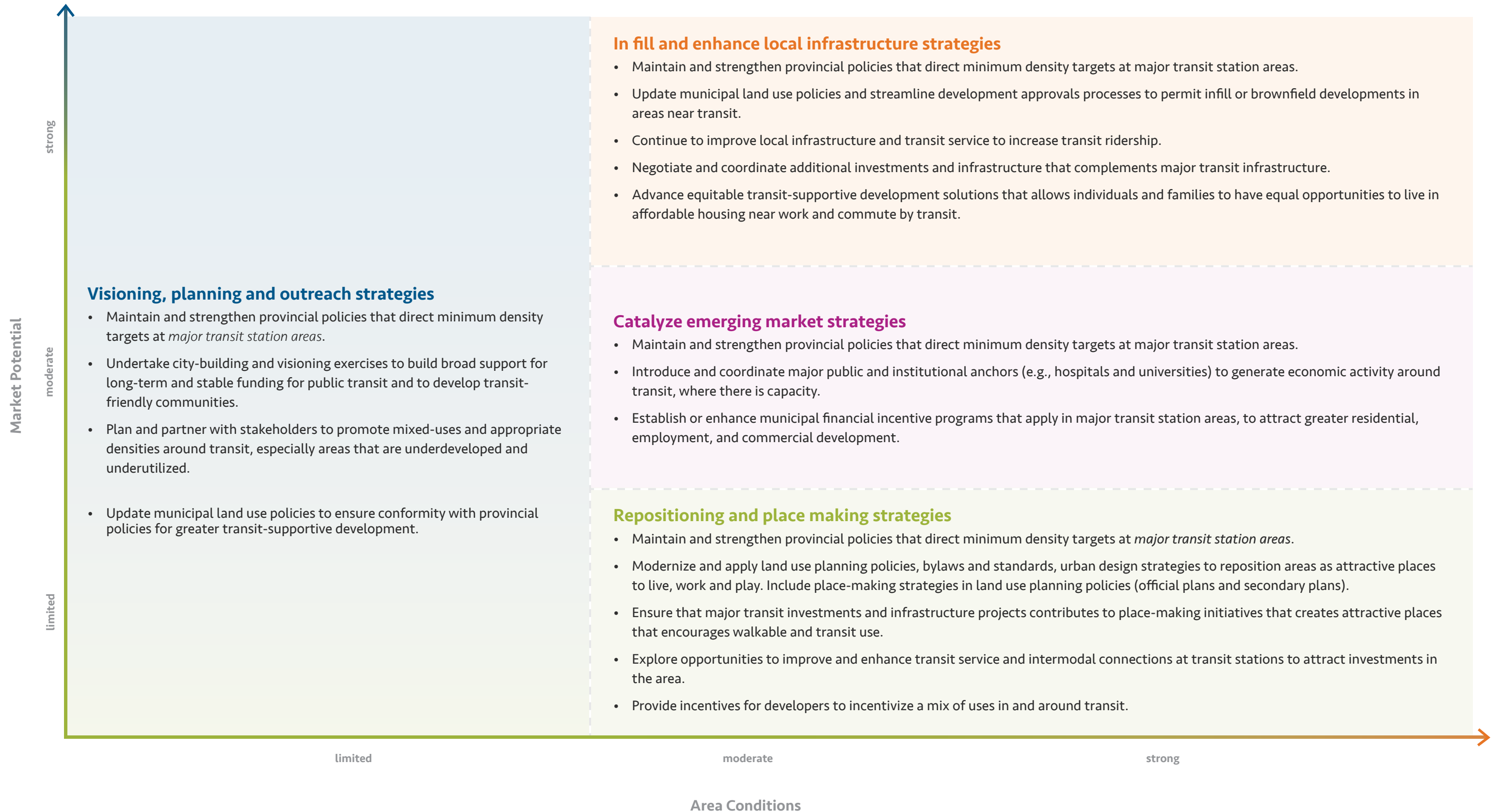


Figure 2: Developing context-sensitive strategies based on transit typology<sup>14</sup>



<sup>14</sup> Adapted framework from the Centre for Transit-Oriented Development, "Making it Happen: Opportunities and Strategies for TOD in the Knowledge Corridor: A Market Analysis for TOD in the Region's BRT and Rail Corridors" (2013), 91 [http://ctod.org/pdfs/20130917\\_CTKC\\_Final\\_Plan.pdf](http://ctod.org/pdfs/20130917_CTKC_Final_Plan.pdf)