

# Paid Work Time



## Noteworthy

- Total hours of paid work per year increased from 1,161 million hours in 1961 to an estimated 2,594 million hours in 2003.
- Hours of paid work per person (population 15 years of age and over) declined from 1,345 hours in 1961 to 1,024 hours in 2003.
- Women had approximately 62% of the hours of paid work that men did in 1999.
- The decline in hours of paid work per person is heavily influenced by the aging population in Alberta as workers are moving into retirement and out of paid work.
- The substantial increase in the number of underemployed workers in Alberta over the study period is influencing the decline in hours of paid work.
- The increase in total hours of paid work in Alberta is associated with an increase in the value of paid work, from \$8,592 million in 1961 to \$61,936 million in 2003 (1998\$).

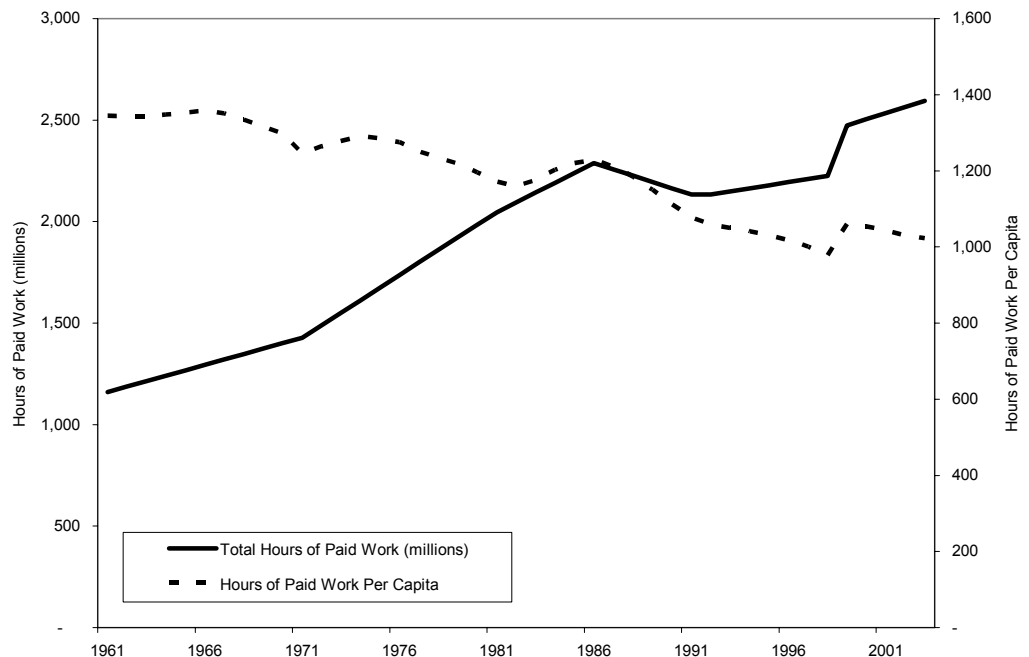
## Paid Work in Alberta: How Much?

Although total hours of paid work continue to increase in Alberta, the hours of paid work per person decreased slightly over the study period. Specifically, total hours of paid work increased from 1,161 million hours in 1961 to an estimated 2,594 million hours in 2003. At the same time, hours per person (population 15 years of age

and over) declined from 1,345 hours in 1961 to 1,024 hours in 2003. The increase in total hours of paid work, is due largely to increases in the population (137% increase) and thus the paid workforce of Alberta over this time period. And the decline in hours per person is influenced by the substantial proportion of the population moving into re-

tirement. As the Alberta population ages, more and more workers are retiring, thus decreasing total hours of paid work. Not only are hours of paid work not shared evenly across all age groups, but they are not shared evenly by sex. Women were responsible for about 62% of the hours of paid work that men were in 1999.

### Paid Work in Alberta, 1961 to 2003

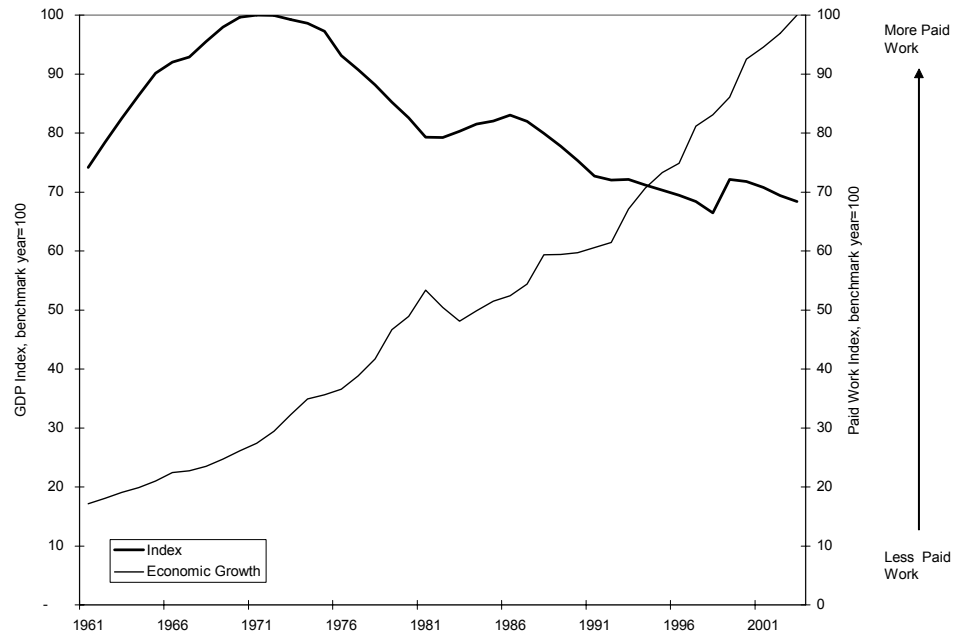


Source: Trend extrapolated from Statistics Canada, General Social Survey for Time Use.

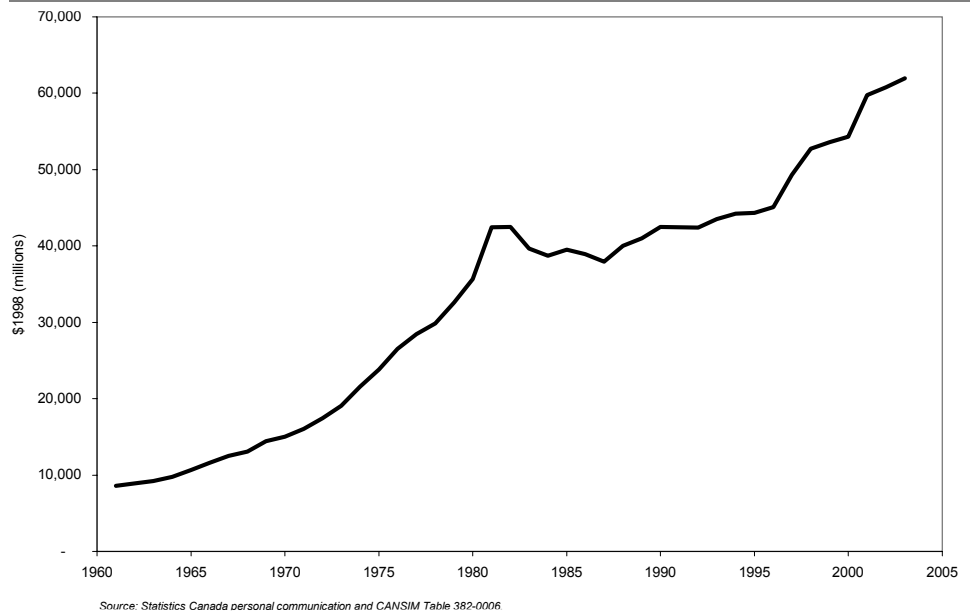
# So What?

In the figure to the right, paid work in Alberta for the study period is shown as an index. The figure also shows the trend in provincial Gross Domestic Product (GDP) over the study period. For the index, 100 is set equal to the highest number of hours worked per week over the study period, provided that the number does not exceed 40 hours per week. Beyond 40 hours per week, some workers will be “over-worked” and thus sacrificing free time, time with family, volunteer work or household work. In other words, beyond 40 hours of work per week, the balance between paid work and unpaid work is stressed. The year in which the highest number of hours devoted to paid work occurred is referred to as the benchmark year. Deviation from that year is measured as an index over time. The benchmark year for Alberta was 1971, when paid workers in this province worked an average of 2,093 hours per labour force participant per year. This is the equivalent of 40 hours of paid work per week. Prior to 1971, the hours of paid work per labour force participant was greater than 40 hours per week and after 1971 the number of paid hours of work per labour force participant was less than 40 hours per week. The decline in the number of hours worked per week since 1971 is likely due to a number of factors, most noticeably Alberta’s aging population. This aging population implies that more workers are moving into retirement and thus out of paid work. As well, the substantial increase in the number of under-employed workers in Alberta over the study period is influencing the decline in hours of paid work. The increase in total hours of paid work in Alberta is associated with an increase in the value of paid work, from \$8,592 million in 1961 to \$61,963 million in 2003 (1998\$).

## Alberta Paid Work Index: Where are we today?



## Big Bucks: The Value of Paid Work in Alberta, 1961 to 2003



The value of paid work in Alberta in 2003 was \$61.2 billion— 49% of 2003 GDP.

As an index, paid work in Alberta in 2003 ranked 68 on a scale where 100 is set equal to 40 hours per week.

