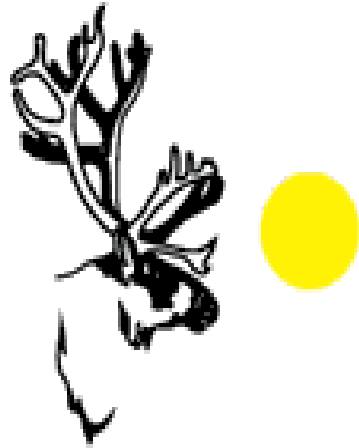


ካፖላርህብኮፕራይንግ



**SAYISI DENE FIRST NATION
TADOULE LAKE, MB**

Sayisi Dene First Nation Solar & Wind Renewable Energy Integration

DARRELL BROWN
KISIK CLEAN ENERGY



Chipewyan
peoples located
250 km west of
Churchill,
Manitoba at
Tadoule Lake

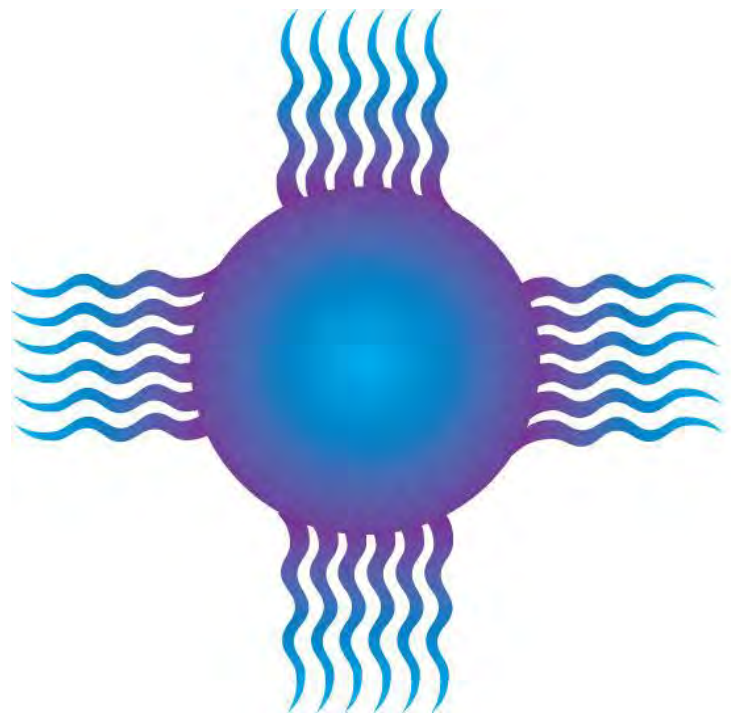


Sayisi Dene First Nation currently burns approximately 600,000 liters of diesel fuel for community electricity annually



Chief Evan Yassie

Chief Yassie began the drive for renewable energy back in September 2020, when Kisik Clean Energy was recruited as project advisor.



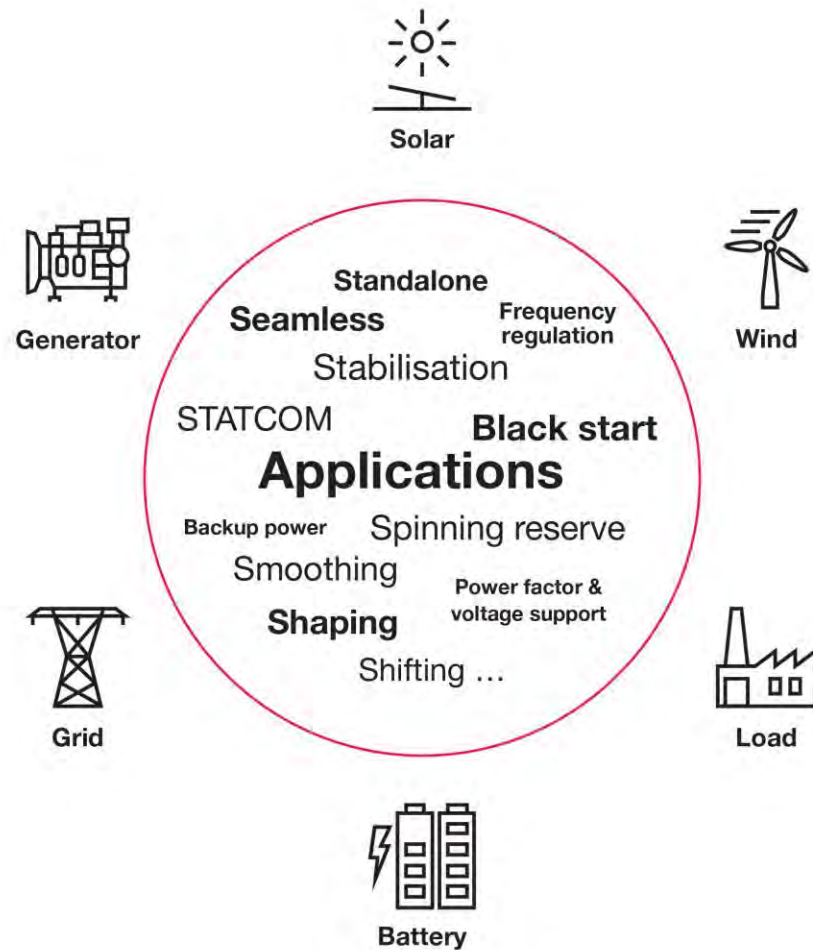
KISIK

CLEAN ENERGY

Stantec Engineering and Kisik Clean Energy are named by Chief and Council to proceed with a feasibility study under a band council resolution dated December 7, 2020



Community Engagement September 2021 Lunch and Renewable Energy Bingo & Presentation



Global service support

Backed by 125 years of technology leadership, domain expertise and the industry's largest installed base, Hitachi Energy helps customers optimize asset performance.

Our after-sales support and global services team enables companies to reduce maintenance spend whilst better protecting assets and employees. Lifecycle management and training can also be provided.

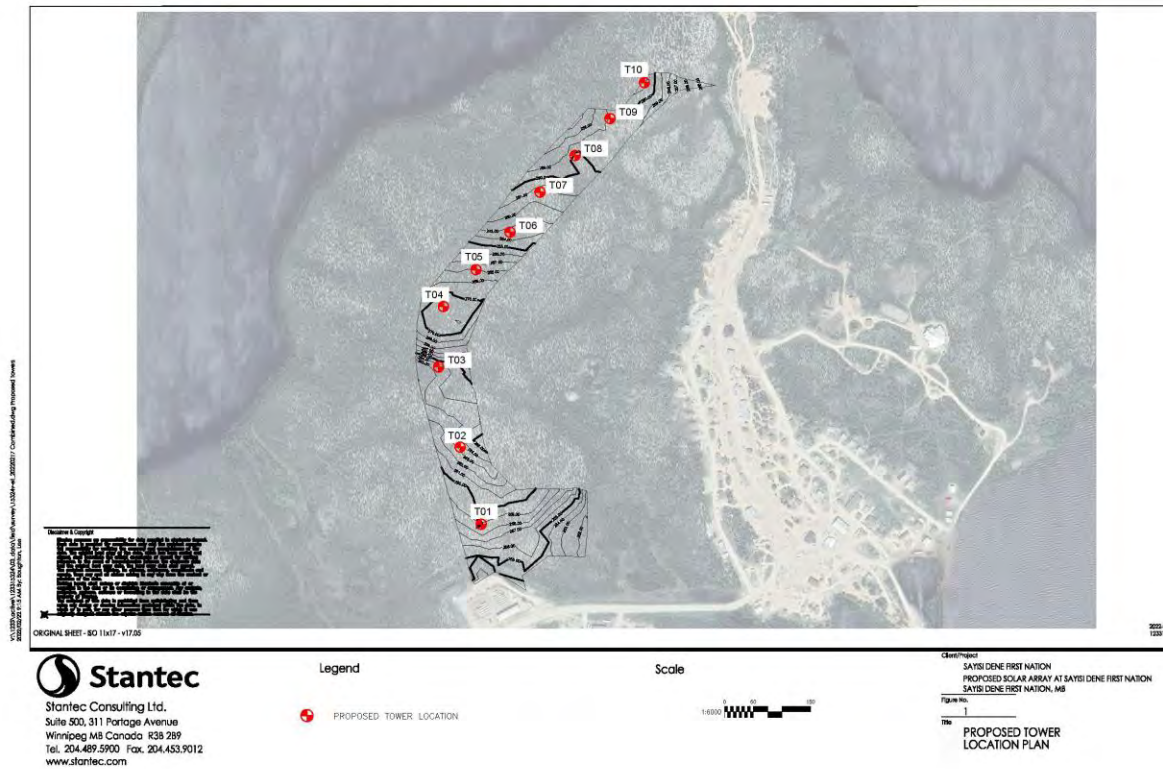
- Wind Turbine: 32m tower, Craneless, 90kW.
- Power Plant : Remote Microgrid: 900kW Wind + 500kW PV Solar
- 500kW/ 640kWh Battery Storage.
- Expected 60% penetration of renewables for diesel power off set



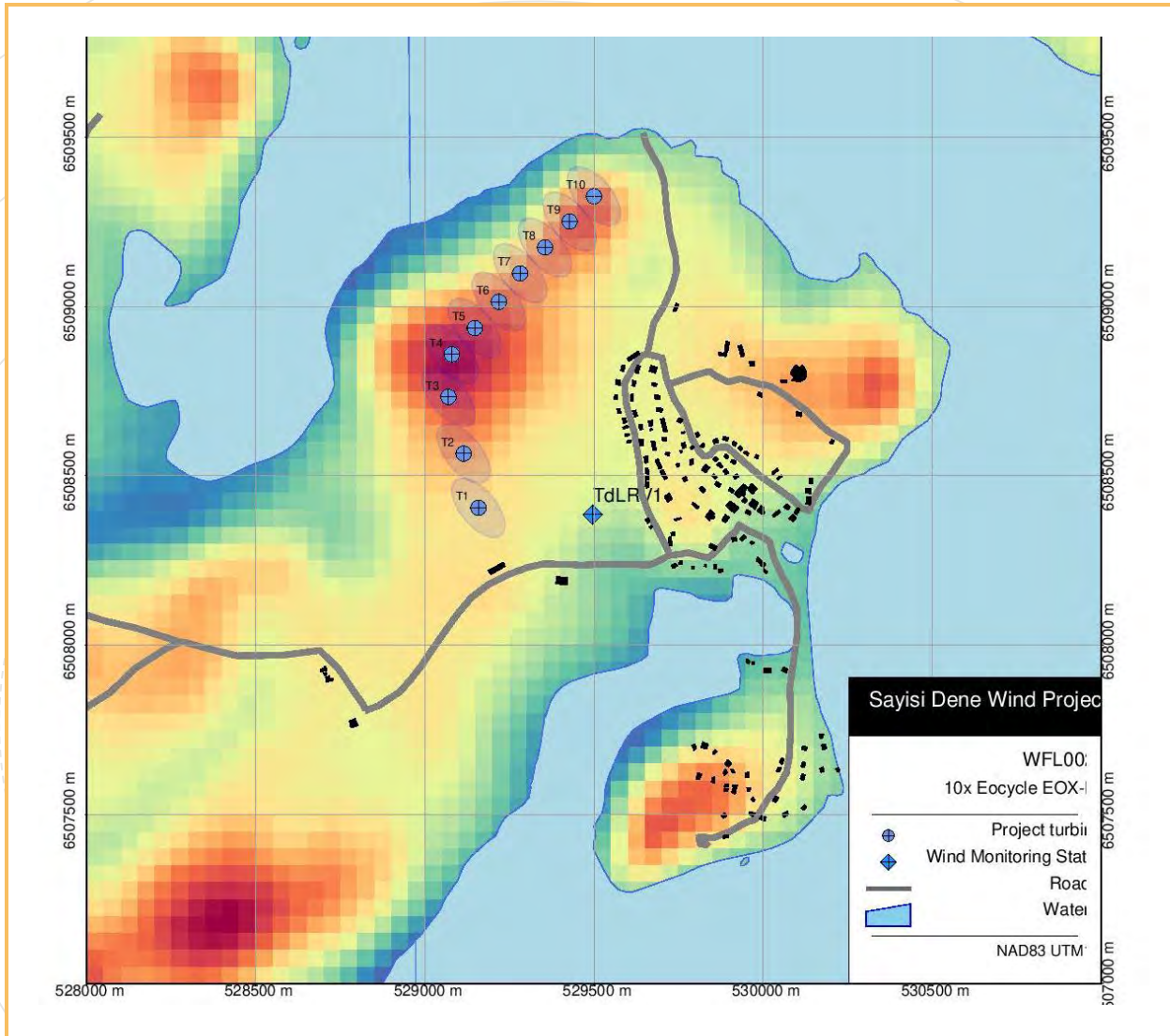
Topographical and Geotechnical Analysis September 2021 & March 2022



10 Self-Erecting 32
Meter tall 90 kW
Craneless Wind
Turbine Towers
being considered



Proposed Wind Tower Locations
based on Aeronautic Study & Diesel
Plant Location



10 Wind Turbines
Layout Map on
reserve land



Community Benefits:
Asset ownership and operation.
Revenue streams from PPA and Carbon Credits.
Employment for maintenance and operations



August 27, 2021 video on project Facebook page uploaded

Ma Si Cho
Thank you
Ekosani
Miigwech

