

Welcome to the Neighbourhood Freight Forum – Meeting #2

- 8:00 Registration and breakfast
- 8:15 Opening remarks
- 8:20 Project updates and recap
- 8:40 Guest presentations – examples to inspire action
- 9:10 Designing solutions – breakout groups
- 9:50 Group presentations
- 10:30 Adjourn

Welcome remarks



Meeting objectives

- Provide project & neighbourhood updates
- Confirm issues identified at the first meeting
- Develop 3-5 specific solutions
- Set next steps



Photo: Lindsay Wiginton, Pembina Institute

Agenda

- 8:00 Registration and breakfast
- 8:15 Opening remarks
- 8:20 Project updates and recap
- 8:40 Guest presentations – examples to inspire action
- 9:10 Designing solutions – breakout groups
- 9:50 Group presentations
- 10:30 Adjourn

Introductions

Project updates and recap

Neighbourhood Freight Forum in the DUKE Heights BIA

- Bring together businesses and local stakeholders
- Find on-the-ground solutions to make goods movement more efficient in the neighbourhood
- 3-year project



Photos: Lindsay Wiginton, Pembina Institute

Duke Heights Business Improvement Area



Benefits to businesses

- Freight solutions can save you money:
 - Reduced congestion and parking concerns
 - Fuel savings
 - Increased delivery reliability
 - Improved safety



Work to date

- Established Project Advisory Group
- Launch of NFF (April 2017)
 - Identifying local issues
- Data collection (summer 2017)
- Business outreach (fall 2017)
 - Email, flyer, calls

What we heard

- Congestion (Dufferin, Keele, Steeles Alness)
 - Traffic volume
 - Intersection size
 - Traffic light timing
 - Concentration of demand at morning and afternoon peaks
 - Lack of north-south and east-west road connectivity



What we heard

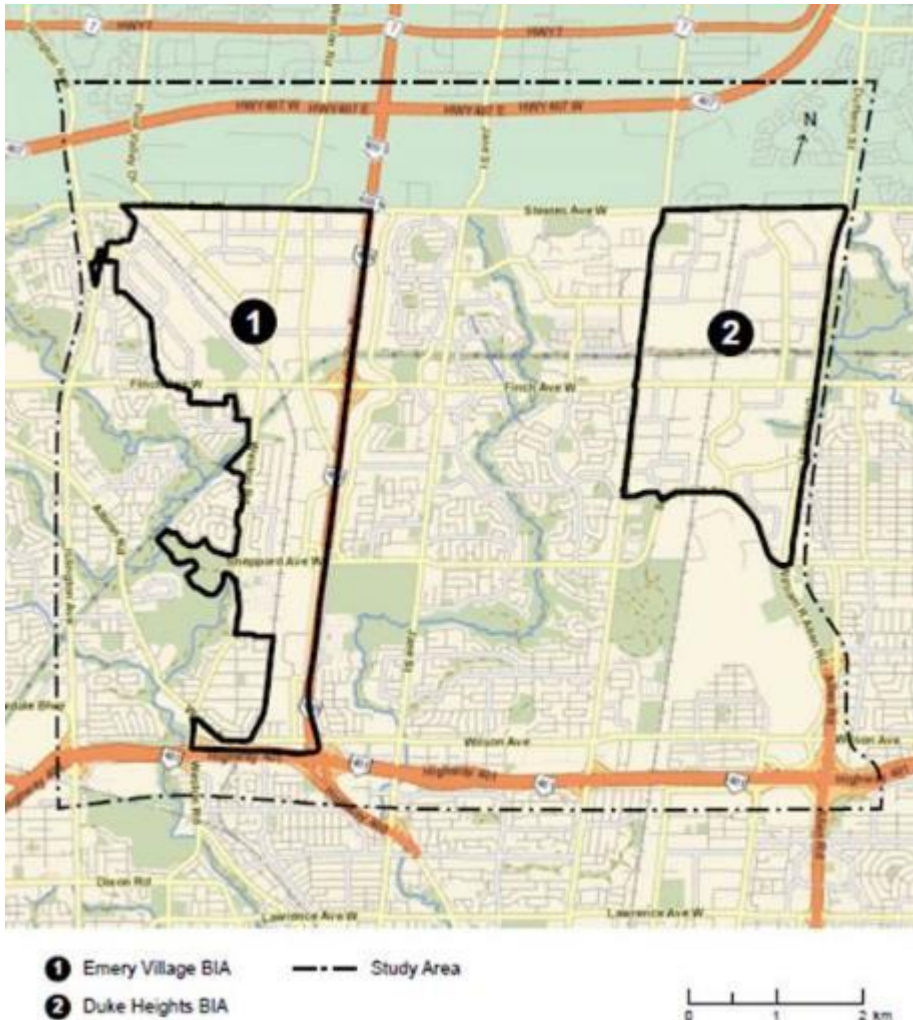
- Major construction
- Illegal parking
- Interaction between trucks and other transportation modes
- Lack of data



Photos: Lindsay Wiginton, Pembina Institute

What we know about the neighbourhood

City of Toronto Northwest Goods Movement Study (not yet started)



- Will assess future truck operations to and from the study area
- Opportunities may include signal timing, alternate routes, new roads

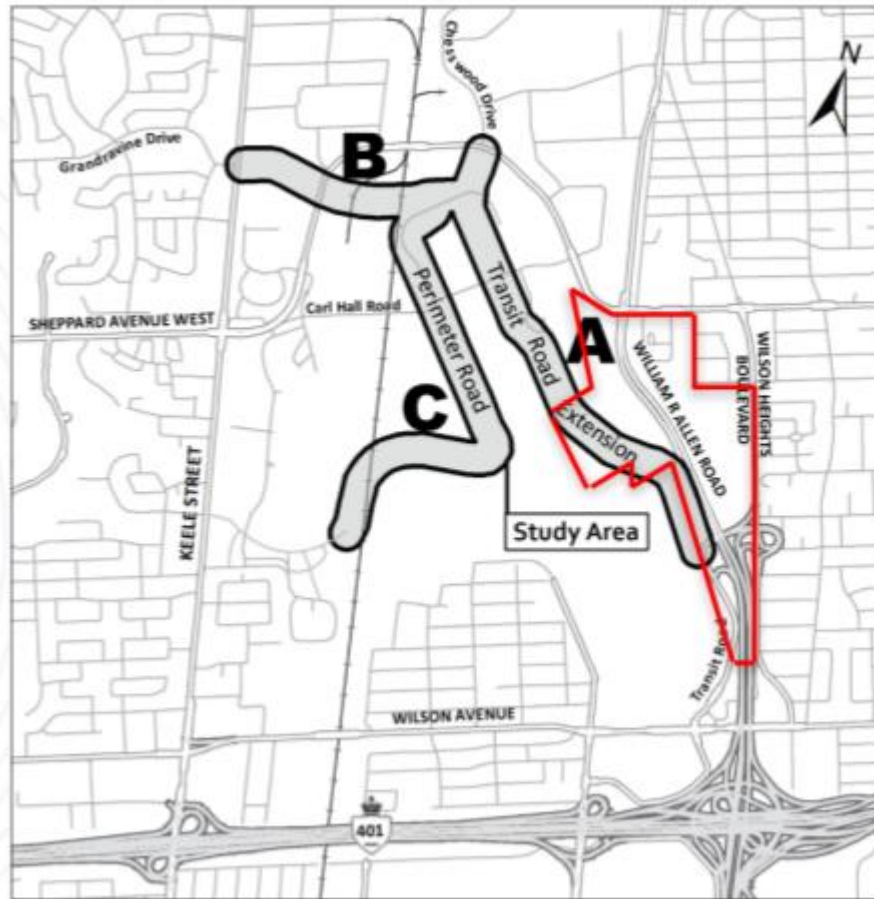
Keele Finch Plus (underway)



- Replanning area around new subway station
- Changes to transportation network

[Link to project page](#)

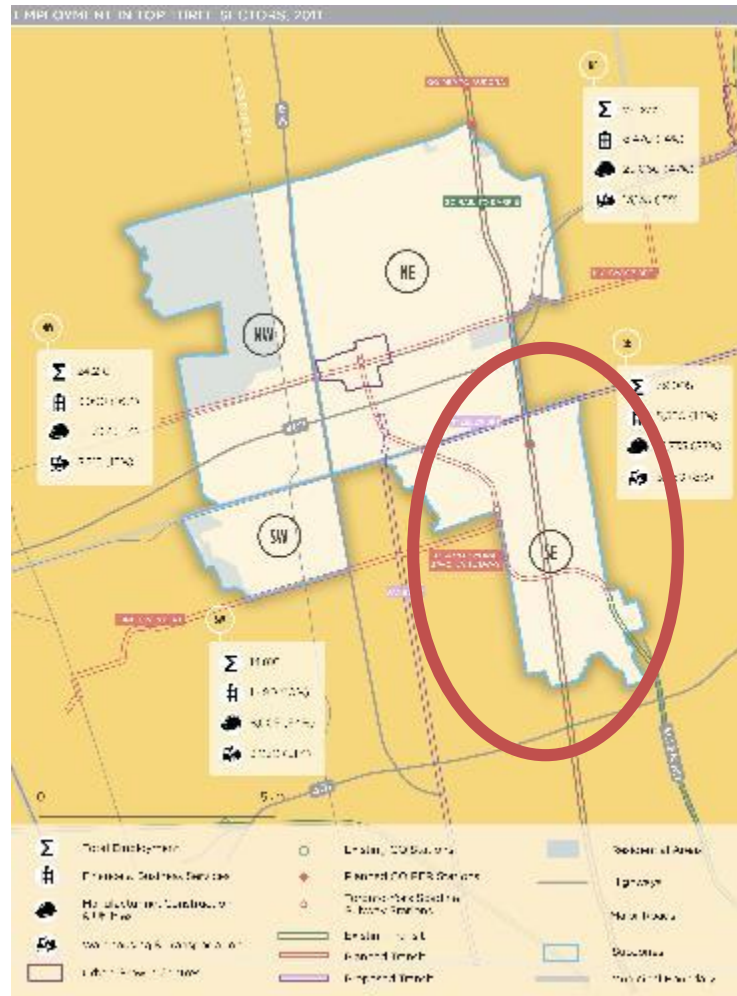
Downsview Secondary Plan: Allen District Plan (underway)



- Redevelopment of Downsview site
- Considering new roads that would connect southward from Sheppard Ave. West

[Link to project page](#)

Tor-York West megazone



- DUKE Heights BIA is part of a larger employment zone that includes Vaughan employment lands, totaling 140,000 jobs
- “The region’s workshop”
- Emerging urban centres around subway extension
- Opportunity for solutions that apply across the megazone

[Link to full profile](#)

City of Toronto: Keele Finch Plus Transportation Study

- Heavy use of arterial roads (lack of inner roads)
- Commercial vehicles ~4.5% of all traffic
- 2/3 vehicles pass through without stopping
- Some roads close to, but not exceeding, vehicle capacity: Dufferin, Steeles, Finch (PM)
- Some intersection movements (Steeles, Finch) are at or over capacity

MTO: Commercial Vehicle Survey 2012

- 1,740 commercial vehicles to/from DUKE Heights BIA carrying \$25 million of commodities on average weekday
- This is intercity/interprovincial/international only; does not account for local trips

Potential solutions

Types of freight solutions

1. Business-led
2. City-led
3. Leveraging existing programs



Guest presentations

Other off-peak delivery initiatives

- New York City
 - Subsidies for receivers and shippers
 - Success for “unassisted” deliveries in the food sector
- Region of Peel
 - Pilot under development



Photo: New York City Department of Transportation

Designing solutions

Work in groups to develop the solution

- Describe your solution
- What types of businesses?
- Who will benefit?
- Who needs to be involved?
- What might get in the way of success?
- Could your solution be applied beyond the DUKE Heights BIA?

Topics

1. Changing how deliveries are done
 - Off-peak delivery
 - Consolidated deliveries
2. Support for businesses to green their fleets
 - Access to programs & information
3. Sharing the road between trucks & other modes
4. Other?

Tips

- Be specific
- Your solution might only apply to certain businesses
- What can your business do?

How do you want to stay engaged?

www.pembina.org/freightforum

Project contact

Lindsay Wiginton, Pembina Institute

647-478-9563 ext. 210 lindsayw@pembina.org

